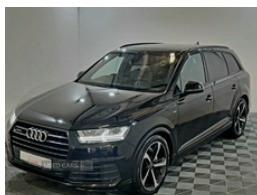
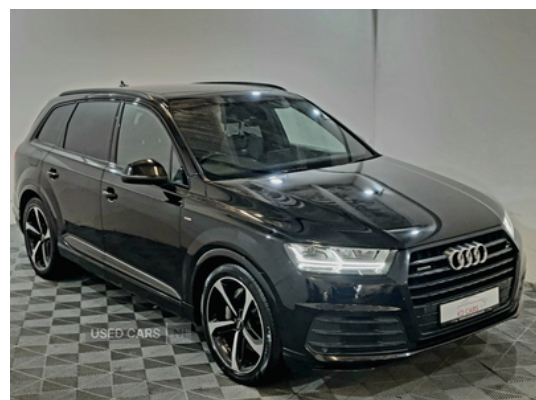




24a Dromore Road Omagh, Omagh, BT78 1QZ  
Jonathan - Sales: 07468525234 | Matthew - sales: 07920044650 | Office: 02882990159

## Audi Q7 50 TDI Quattro Black Edition 5dr Tiptronic | Jun 2019

**SOLD SOLD SOLD**



### Vehicle Features

2 cupholders in front centre console, 2 USB ports, 2 X SD card slot, 3 point seatbelts on all seats, 8.3" central fold-down colour display with high-resolution graphics, 35/30/35 split fold 2nd row seats, ABS+Electronic Brake force Distribution, Acoustic windscreen, Adaptive air sports suspension, Anti-theft wheel bolts, Anti theft alarm, Audi connect safety and service (e-call), Audi drive select, Audi music interface, Audi phone box with wireless charging, Audi smartphone interface, Audi Virtual Cockpit - 12.3" LCD instrument cluster, Auto dimming rear view mirror, Aux-in socket, Body coloured bumpers, Chrome door inserts, Colour driver's information system display, Curtain airbags, DAB digital radio module, Driver and passenger airbags, DVD System, EDL + ASR, Electric/heated/folding door mirrors with memory, Electric 3rd row 50/50 split/fold, Electrically operated child locks on rear doors, Electric front+rear windows, Electric panoramic glass sunroof, Electromechanical parking brake, Electronic stability control, Front/rear floor mats, Front ashtray and cigar lighter, Front centre comfort armrest with storage + cupholders, Front head restraints, Front side airbags, Gearshift paddles, Green tinted heat insulating glass, Headlight washers, High beam assist, Hill descent control, Hill hold assist, Immobiliser, Interior light pack - Q7, ISOFIX child seat mounting for 6 passenger seats with front passenger airbag deactivation includes top tether, Keyless Go access/ignition system, Leather gear knob, LED daytime running lights, Loading sill protector in stainless steel, Luggage compartment cover, MMI - Multi Media Interface control system, MMI navigation plus with MMI touch, MMI radio plus, Mobile phone preparation with bluetooth interface, Platinum grey front lip spoiler, Power tailgate, Privacy glass, Rain and light sensors, Rear centre armrest with 2 cupholders, Rear headrests, Rear wiper, Remote central locking, Roof spoiler, Seatbelt warning, Service interval indicator, Servotronic speed related PAS, Speed limiter, Stainless steel pedals, Start/Stop system with energy recuperation, Sunvisors

# £27,990

|                         |                          |
|-------------------------|--------------------------|
| <b>Miles:</b>           | 80000                    |
| <b>Fuel Type:</b>       | Diesel                   |
| <b>Transmission:</b>    | Semi-Automatic           |
| <b>Colour:</b>          | Black                    |
| <b>Engine Size:</b>     | 2967                     |
| <b>CO2 Emission:</b>    | 178                      |
| <b>Tax Band:</b>        | Petrol/Diesel (£195 p/a) |
| <b>Body Style:</b>      | Sport utility vehicle    |
| <b>Insurance group:</b> | 44E                      |
| <b>Reg:</b>             | MH19CXC                  |

### Technical Specs

|                                     |                 |
|-------------------------------------|-----------------|
| <b>DIMENSIONS</b>                   |                 |
| <b>Length:</b>                      | 5052mm          |
| <b>Width:</b>                       | 1968mm          |
| <b>Height:</b>                      | Not Availablemm |
| <b>Seats:</b>                       | 7               |
| <b>Luggage Capacity (Seats Up):</b> | 295L            |
| <b>Gross Weight:</b>                | 2990KG          |
| <b>Max. Loading Weight:</b>         | 855KG           |

|                                    |          |
|------------------------------------|----------|
| <b>PERFORMANCE &amp; ECONOMY</b>   |          |
| <b>Fuel Consum. (Urban Cold):</b>  | 37.2MPG  |
| <b>Fuel Consum. (Extra Urban):</b> | 44.1MPG  |
| <b>Fuel Consum. (Combined):</b>    | 41.5MPG  |
| <b>Fuel Tank Capacity:</b>         | 85L      |
| <b>Number Of Gears:</b>            | 8 SPEED  |
| <b>Top Speed:</b>                  | 152MPH   |
| <b>Acceleration 0-100 km/h:</b>    | 6.3s     |
| <b>Engine Power BHP:</b>           | 281.6BHP |

with illuminated vanity mirrors, Tool kit, Traction control, Tyre pressure loss indicator, Tyre repair kit, Voice control system, Warning triangle and first aid kit