

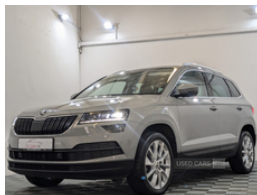


24a Dromore Road Omagh, Omagh, BT78 1QZ
Jonathan - Sales: 07468525234 | Matthew - sales: 07920044650 | Office: 02882990159

Skoda Karoq 1.6 TDI SE L 5dr | Jul 2018

SOLD SOLD SOLD

£10,890



Vehicle Features

3 point front/outer rear seatbelts+pre-tensioners, 3 rear height adjustable headrests, 3x3 point rear seatbelts, 4 lashing points on luggage floor, 12V power point in luggage area, 12V socket in centre console, 60/40 split fold rear seat back, ABS, Acoustic glass, Aero wiper + intermittent function, Alarm with interior monitoring and tilt sensor, Aluminium window surround, Anti-theft wheel bolts, ASR, Automatic headlight control system, Automatic unlocking of doors in case of impact, Backrest release, Body colour door handles, Body colour door mirrors, Body coloured bumpers, Bolero Radio, Bottle holders, Chrome air vent surrounds, Chrome inner door handles, Chrome roof rails, Curtain airbags, DAB Digital radio, Diesel particulate filter, Drive mode selector, Driver's lumbar support, Driver alert system, Driver and passenger airbags, Driver and passenger side airbags, Driver profile selection, Drivers knee airbag, Dual zone automatic air conditioning with humidity sensor and control, EDL, Electric front windows, Electric pack A - Transporter, Electric rear windows with child safety lock, Electro-mechanical PAS, Electronic immobiliser, Electronic parking brake, ESP including MBA, Fatigue detection system, Floor mats, Folding tables on the front seat backrests, Front/rear reading lights, Front and rear parking sensors, Front assist including city emergency braking, Front centre armrest with storage compartment, Front doors reflectors, Front seatback pockets, Fuel supply cut off, Full LED headlights + adaptive front light system + LED daytime running lights and front cornering fog lights, HBA, Head airbags, Headlight washers, Heated rear window, Height/reach adjust steering wheel, Height adjustable passenger seat, Hill hold control, Illuminated air conditioned glovebox, Illuminated luggage compartment, Isofix system on outer rear seats, Keyless entry and keyless start, Light assistant (coming home/tunnel light), Luggage compartment cover, MSR, Multifunction colour trip computer, Outside temperature gauge, Parcel shelf - retractable, Passenger airbag deactivate switch, Passenger lumbar support, Passenger side net compartment on

| | |
|-------------------------|--------------------------|
| Miles: | 103000 |
| Fuel Type: | Diesel |
| Transmission: | Manual |
| Colour: | Grey |
| Engine Size: | 1598 |
| CO2 Emission: | 120 |
| Tax Band: | Petrol/Diesel (£195 p/a) |
| Body Style: | Estate |
| Insurance group: | 10E |
| Reg: | AJ18BYV |

Technical Specs

| | |
|-------------------------------------|--------|
| DIMENSIONS | |
| Length: | 4382mm |
| Width: | 1841mm |
| Height: | 1603mm |
| Seats: | 5 |
| Luggage Capacity (Seats Up): | 479L |
| Gross Weight: | 1984KG |
| Max. Loading Weight: | 633KG |

| | |
|------------------------------------|---------|
| PERFORMANCE & ECONOMY | |
| Fuel Consum. (Urban Cold): | 56.5MPG |
| Fuel Consum. (Extra Urban): | 64.2MPG |
| Fuel Consum. (Combined): | 61.4MPG |
| Fuel Tank Capacity: | 50L |
| Number Of Gears: | 6 SPEED |
| Top Speed: | 116MPH |
| Acceleration 0-100 km/h: | 10.7s |
| Engine Power BHP: | 114BHP |

centre console, Pollen filter, Privacy glass, Rear view camera,
Remote central locking, Removable LED light in boot, SD card
slot, Seatbelt warning lamp, Service interval indicator, Speed
limiter, Storage box in dash, Storage under front passenger seat,
Sunglasses storage, Sunvisors with illuminated vanity mirrors,
Two tone horn, Tyre pressure monitor, Umbrella under front
passenger seat, USB connection, Varioflex individually
removeable/folding rear seats